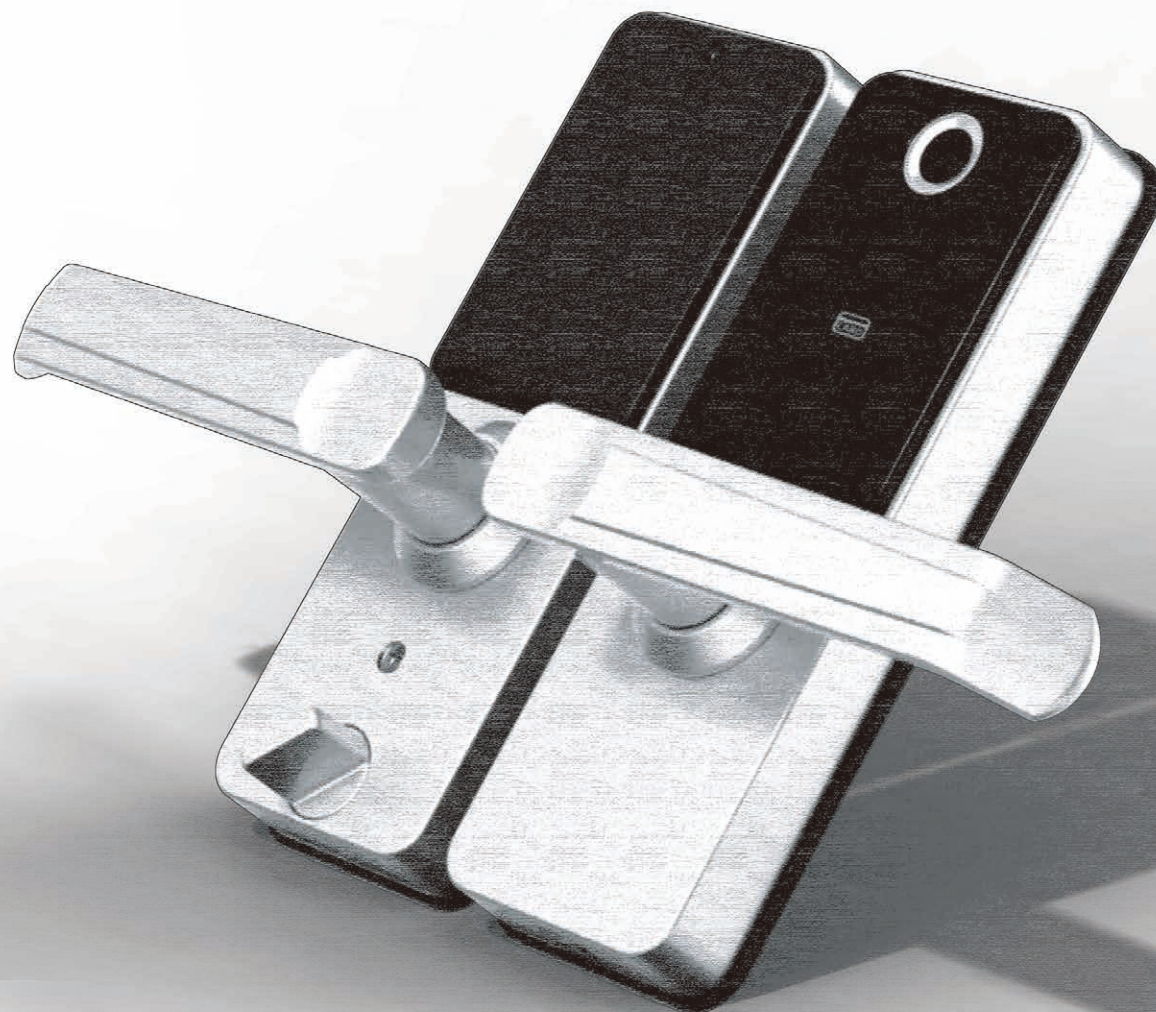


# Product Manual



## 🔔 Attention

1. Keep a mechanical key in your hand or put it outside.
2. Hold the modular box when reversing the mechanical key.
3. Clean the finger sensor with the dry cotton regularly.

# Contents



*smart lock*

## -1

### Installation Guide

- Accessory ..... 01
- Attentions ..... 02
- Installation step ..... 03

## -2

### Operation Guide

- APP configuration ..... 05
- Add lock, Add administrator ..... 06
- Unlock ways ..... 07

## -3

### Product Parameters

- Technical parameter ..... 08

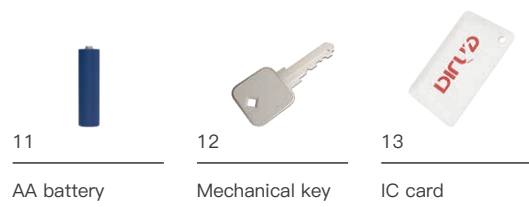
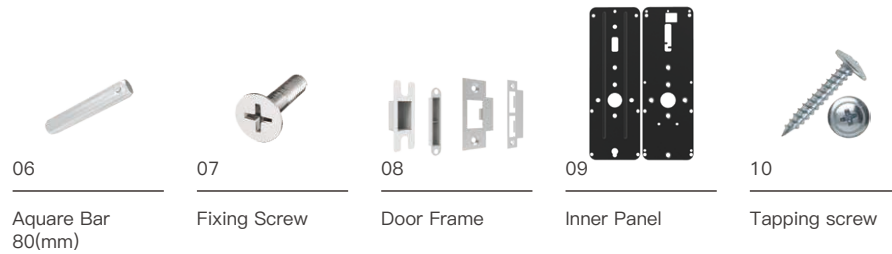
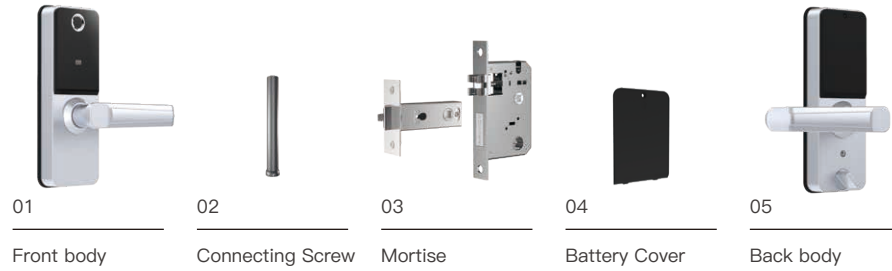
## -4

### After-Sale Service

- Warranty statement ..... 09
- Product warranty card ..... 10

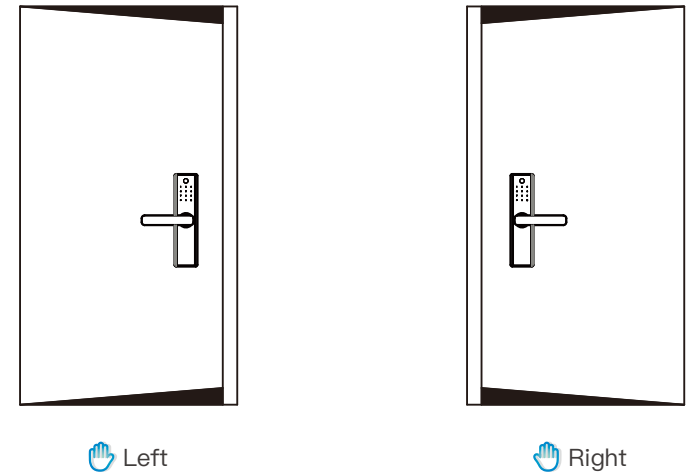
⦿ Accessory

1.1



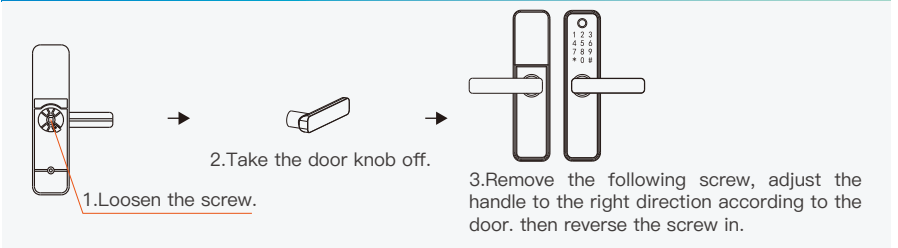
⦿ Confirm the direction of the handle

1.2



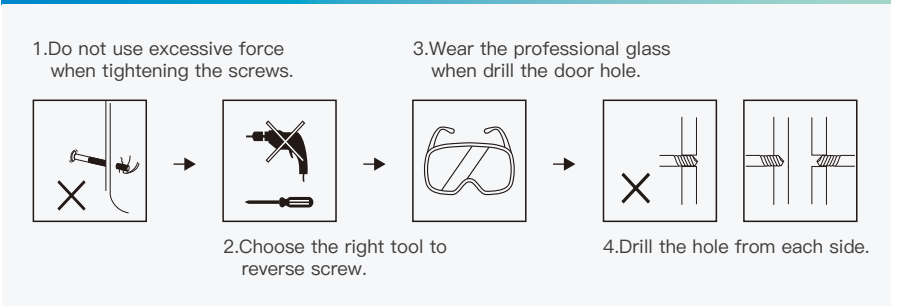
⦿ Adjust the direction of the handle

1.2

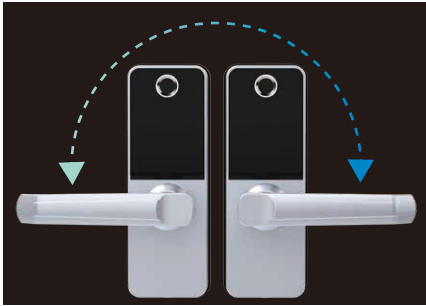


⦿ Attentions

1.2



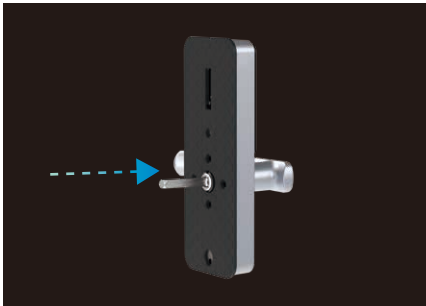
🕒 Installation step 1.3



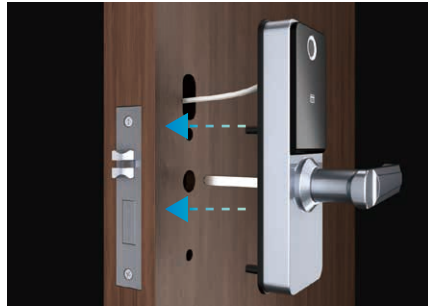
1. Adjust the handle direction according to the door.



2. Install the inner panel into the door frame Tighten the fixing screw of lock body.



3. Insert the square bar in to the hole.



4. Align the front lock body with the opening position and install the square bar.



5. Install the inner panel.



6. Fix with the screws.



7. Connect the main board connecting cable and put the redundant cable in to the slot.



8. Align the square bar with the back body and compress the inner panel.



9. Fix the back body with screws.



10. Put the battery in then cover it. lock the screws.



**Video for installation**

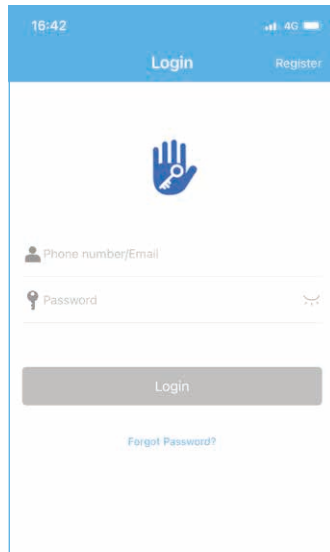
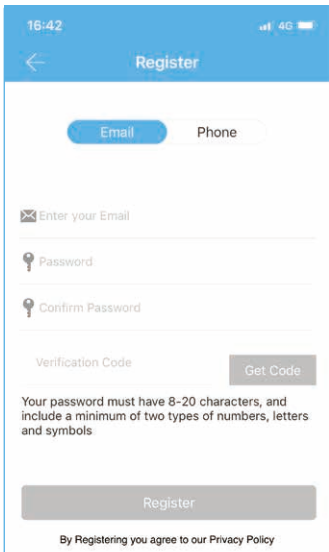
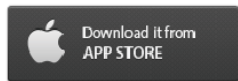
\*After installation, please check whether fingerprint, password, IC card, key, internal and external handle, and antilock switch can work normally. If it can't be used normally check for improper installation.

APP configuration 2.1



• App download

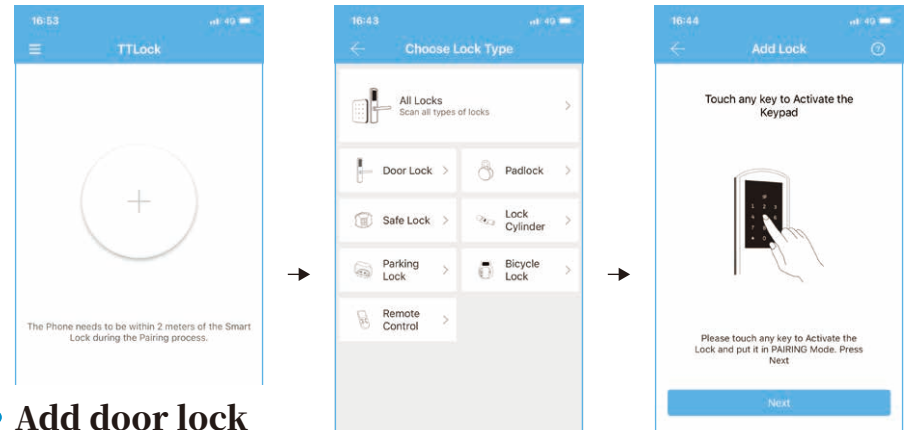
The software (IOS version) can be downloaded from the app store, and the Android version can be downloaded from the application store of Google play, Yingyongbao, Baidu, Ali,360, Huawei, and Xiaomi.



• Registration and login

TT lock users can register the account by mobile phone and Email which currently support 200 countries and regions on the world. The verification code will be sent to user's mobile phone or email, and the registration will be successful after the verification.

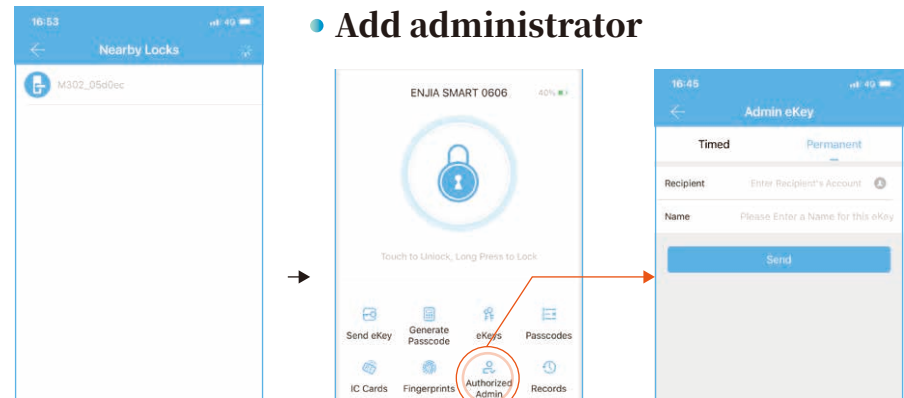
Add lock, Add administrator 2.2



• Add door lock

The lock must be added on the app before it can be used. The addition of a lock refers to the initialization of the lock by communicating with the lock via Bluetooth. Please stand beside the lock. Once the lock is added successful, you can manage the lock with the app including sending a key, sending a password, and so on.

• Add administrator



When the lock is added, the adder becomes the administrator of the lock. At the same time, the lock cannot enter the setup mode by touching the keyboard. This lock can only be re-added after the current administrator has deleted the lock. The operation of deleting the lock needs to be done by Bluetooth beside the lock.

🕒 Unlock ways 2.3

**APP**

1

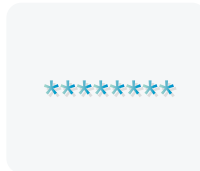
Click the unlock button to unlock the door.



**Password**

2

Choose to get the password on the app home page, and set the permanent / single / custom password according to the demand. You can use random distribution or custom password to unlock.



**Fingerprint**

3

Fingerprint management is similar to IC card management. After adding a fingerprint, you can use the fingerprint to unlock the door.



**IC Card**

4

You need to add the IC card first. The whole process needs to be done via the app near the lock. The validity period of the IC card can be set, either permanent or time-limited.



**Mechanical Key**

5

Open the mechanical key cover below the out panel. Insert the key to unlock.



🕒 Technical parameter 3.1

|                       |  |
|-----------------------|--|
| Bluetooth Standard:   | Bluetooth 4.1BLE                                 |
| Support Phone System: | Android4.3/Above IOS7.0                          |
| Power Supply:         | 4AA alkaline Batteries                           |
| Alarm Voltage:        | 4.8V   |
| Voltage:              | 4.5-9V   |
| Standby Current:      | 65UA   |
| Working Current:      | Below 200mA bluetooth 4.1BLE                     |
| Unlock Time:          | About 1.5s                                       |
| Working Temperature:  | -20-70   |
| Button Type:          | Capacitive touch sensor                          |
| Password Capacity:    | Permanent 150/changeable 150                     |
| Support Card:         | MIFARE M1  |
| Capacity Card:        | 200  |
| Unlock Way:           | App/password /fingerprint/IC card/mechanical key |
| Motor Output Voltage: | Batteries voltage-0.3V                           |
| Fingerprint Sensor:   | Semiconductor                                    |
| Fingerprint Capacity: | 120  |
| Far:                  | Below 0.001%                                     |
| Frr:                  | Below1.0%  |

## 🕒 Warranty statement

4.1

ENJA warranties to the purchaser of an ENJA product as follows: ENJA guarantees that all ENJA manufactured products undergo comprehensive quality control testing before delivery. In the event that any nonconformity occurred with respect to the product, ENJA will provide product repair or replacement service within the warranty period according to this agreement.

ENJA's liability is limited from the defective product. Allegedly nonconforming product shall be returned as provided herein to ENJA, transportation charges prepaid. All warranties cover only defects arising under normal use in compliance with ENJA's specifications.

### WHAT IS NOT COVERED BY THIS WARRANTY

1. This Warranty does not cover defects and damage resulting from:
  - a) Normal wear and tear of the equipment or otherwise due to the normal aging of the equipment.
  - b) The Product being used other than in a normal and customary manner.
  - c) Any disassembly, repair, alteration or modifications carried out by anyone other than ENJA or an Authorised Service Center.
  - d) Misuse, abuse, negligence or an accident howsoever caused.
  - e) Improper testing, operation, maintenance, installation, or any alteration or modification of the Product.
  - f) Spillage of food or liquids, corrosion, rust or the use of wrong voltage.
  - g) Scratches or damage to plastic surfaces and all other externally exposed parts due to normal use.
  - h) Use outside of use permitted under the Product's user manual.
  
2. This Warranty will not be available: a) if the serial number or warranty seal on the Product is illegible, has been defaced or removed; or, b) without any proof of purchase.
  
3. If the Product is not applicable to this Limited Warranty after having been checked by ENJA, ENAJ will only proceed with the repair service with additional charge after obtaining customer's consent.
  
4. Please keep this Warranty Card in proper condition. Customers are required to present this Warranty Card and the original sales invoice to the Company upon request for warranty service.
  
5. ENJA does not assume any liability for any special, indirect, incidental, punitive, or consequential damages of any kind whatsoever, including but not limited to loss of profits or revenues, loss of data, loss of use of the Product, cost of replacement or substitute items, or loss of use during the period that the Product is being replaced or repaired.
  
6. IN no event shall ENJA's liability for any claim arising out of or related to this Warranty exceed the price paid by you for purchase of the Product.26.

## 🕒 Product warranty card (user sheet)

### User information (to be filled in by user)

|                    |                |
|--------------------|----------------|
| User name:         | Tel:           |
| Date of purchase:  | Product model: |
| Product number:    | Invoice No:    |
| Post code address: |                |

### Maintenance record (to be filled in by maintenance personnel)

|                                     |
|-------------------------------------|
| Maintenance date:                   |
| Fault condition:                    |
| Replacement parts (name, quantity): |
| Signature of repairman:             |
| User signature:                     |

## 🕒 Product warranty card (seller's Union)

### User information (to be filled in by user)

|                    |      |
|--------------------|------|
| User name:         | Tel: |
| Date of purchase:  |      |
| Invoice No:        |      |
| Post code address: |      |

